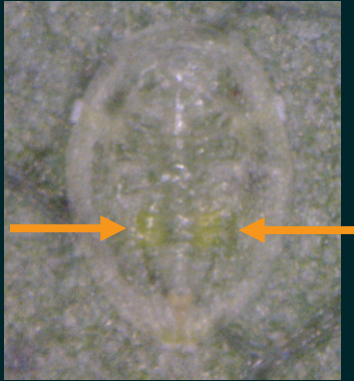


Silverleaf whitefly: healthy vs parasitised late stage (4th instar) nymphs

Healthy SLW



Fourth instar nymph with healthy mycetomes



Red eye nymph development (the white wing buds appear just before emergence)



Parasitised SLW



Adult *Encarsia* (left) and *Eretmocerus* sp. Empty nymph case with chewed exit hole



Empty pupal case (pushed open) and adult SLW

Signs of parasitism:



Displaced mycetomes



Parasitoid larva



Red faecal waste



Examples of parasitoid pupae (colours may vary)



With support from:

