

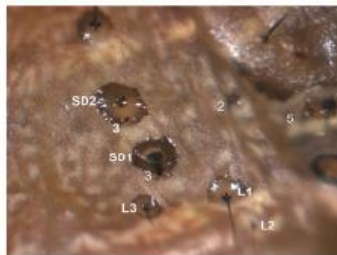
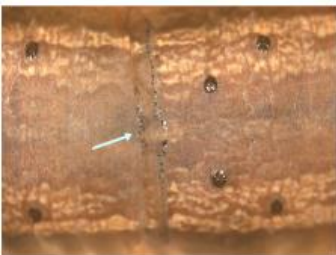
Fall armyworm diagnostics

Plant Biosecurity Laboratory

Qld-DAF



Mark Schutze



Bulletin OEPP/EPPO Bulletin (2015) **45** (3), 410–444

ISSN 0250-8052. DOI: 10.1111/epp.12258

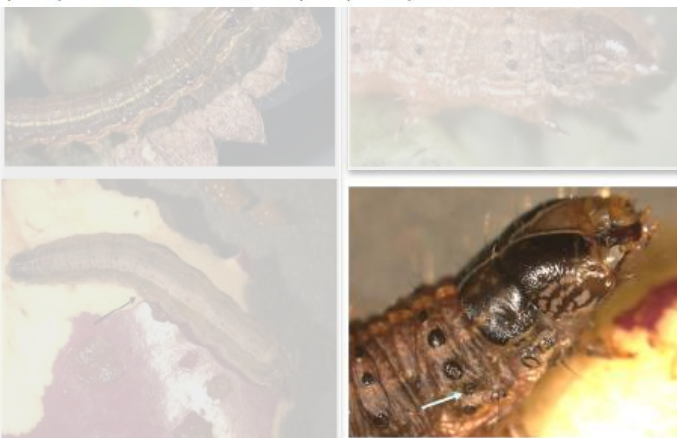
European and Mediterranean Plant Protection Organization
Organisation Européenne et Méditerranéenne pour la Protection des Plantes

PM 7/124 (1)

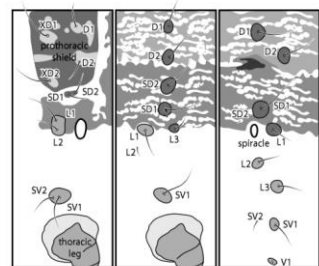
Diagnostics Diagnostic

PM 7/124 (1) *Spodoptera littoralis*, *Spodoptera litura*, *Spodoptera frugiperda*, *Spodoptera eridania*

Figs 36–41 Second, third and fourth line, from the left to the right and top to bottom. Last instar of *Spodoptera frugiperda*. Photos M. vd Straten © NPPO, the Netherlands. Fig. 41: Seta MD1, MD2, MSD1 and MSD2 present on 2nd and 3rd thorax segments; M1 and SD2 present on all abdominal segments (2); a heavily sclerotized spot at ventral margin of SD1- & SD2-pinaculum (3); on 2nd and 3rd thorax segments seta L3 about half the length of L1, L2 is hairlike and situated on ventral margin of the spiracular line; on 1st thorax segment setae SD1 and SD2 on a joint pinaculum positioned ventral of the thorax shield (5); MXD1 is present at posterior margin of thoracic shield.



Spodoptera frugiperda (J.E. Smith)

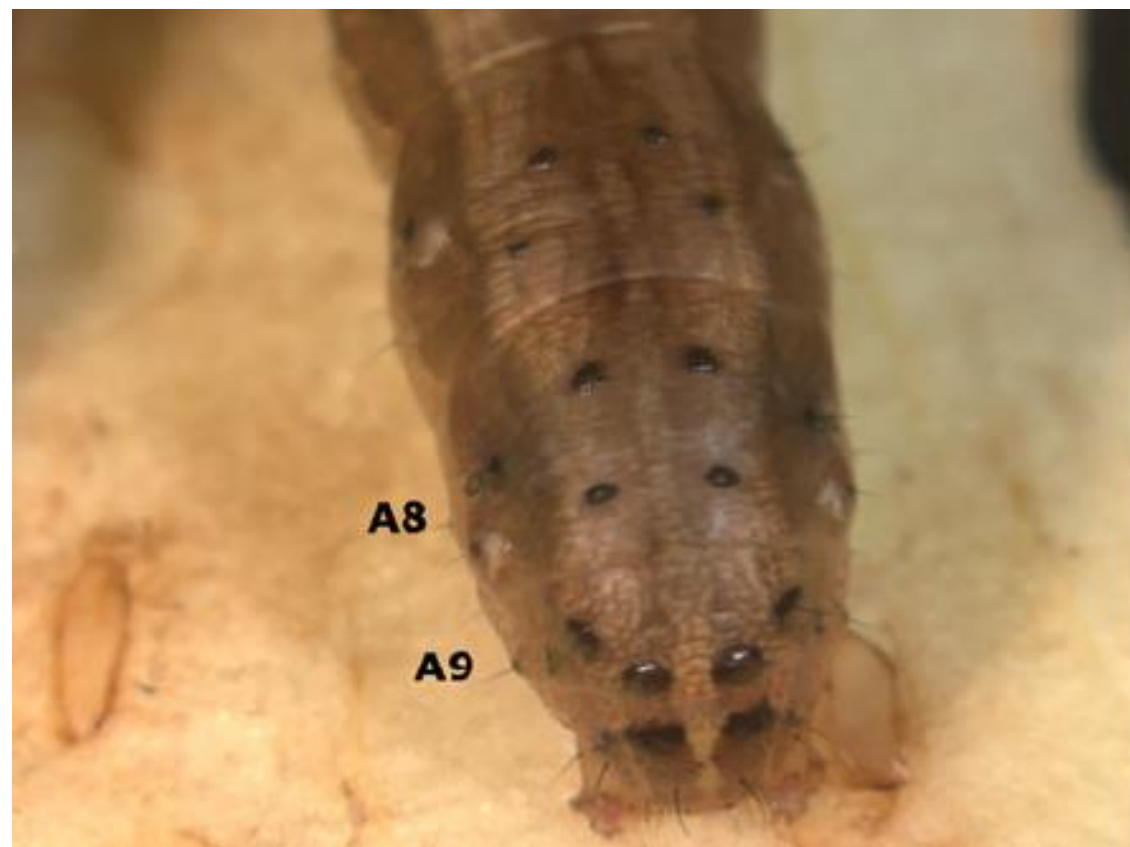
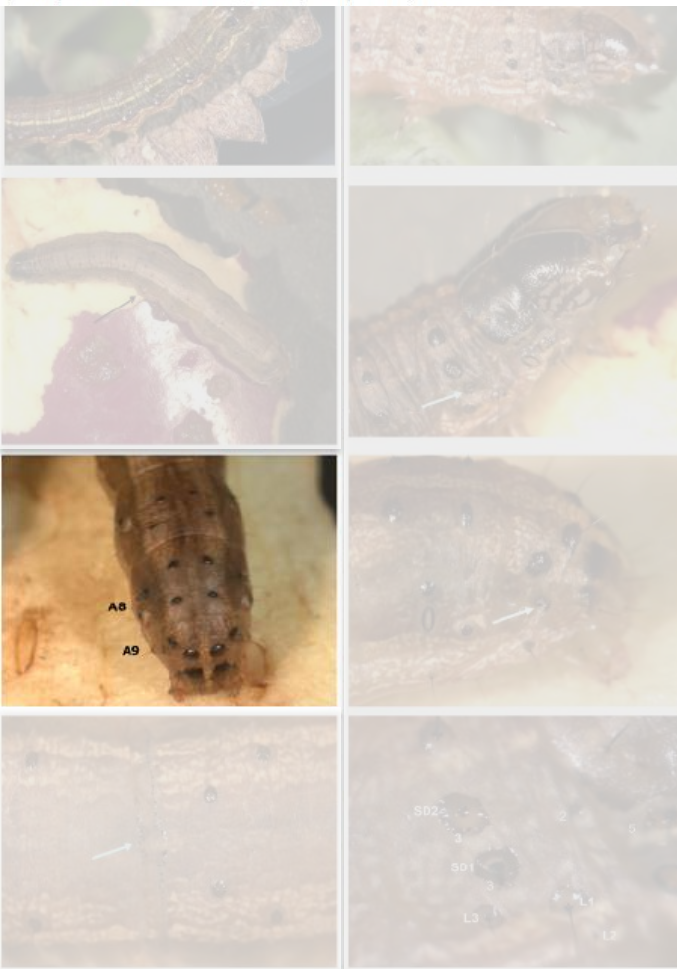


Gilligan, T.M. & S. C. Passoa. 2014. *LepIntercept: An Identification Technology Program (ITP)*, USDA/APHIS/PPQ



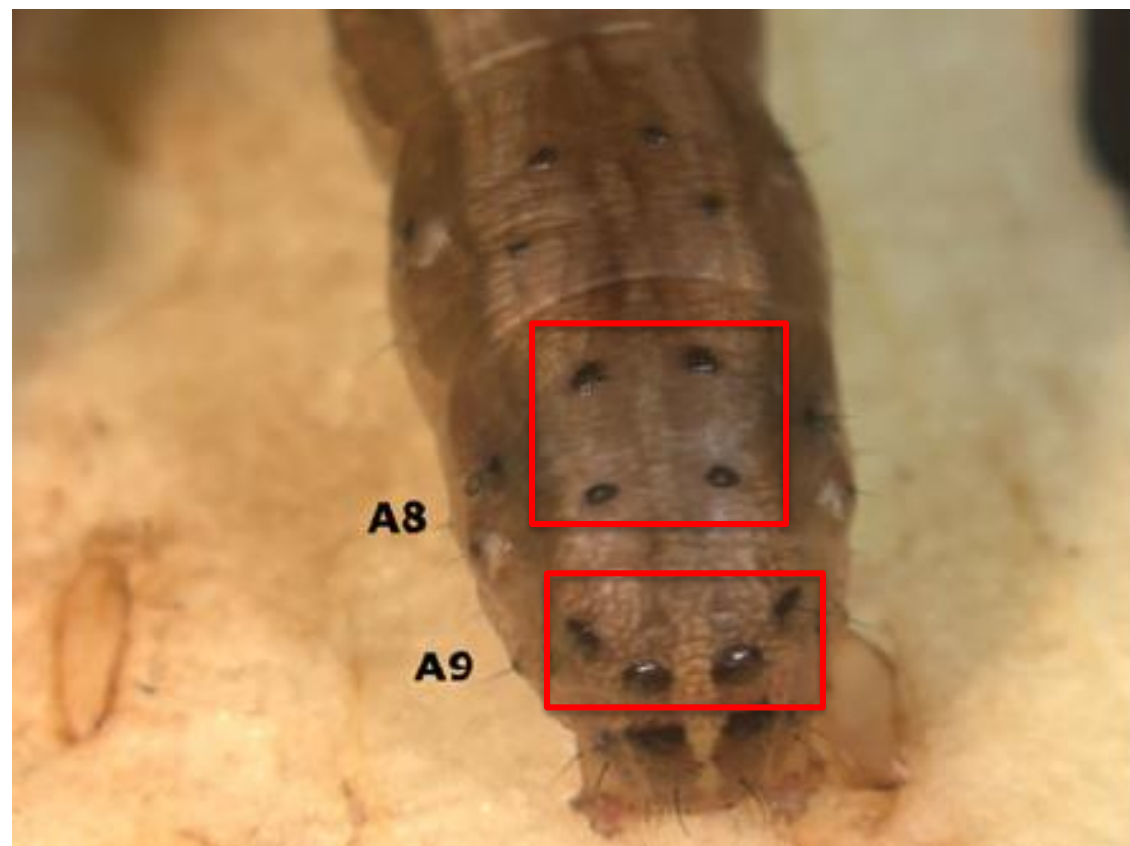
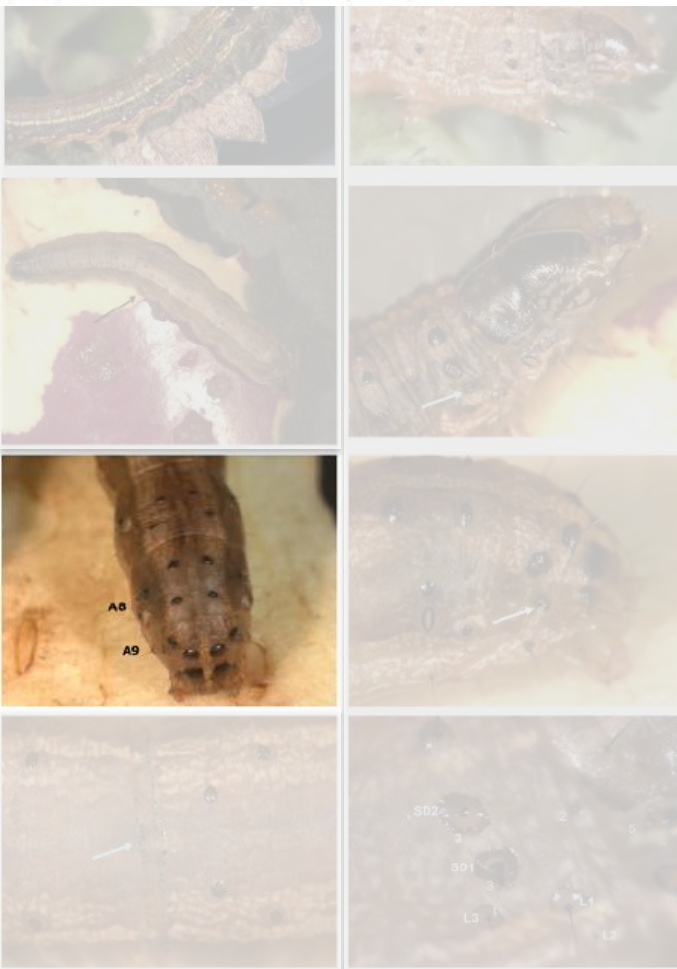
Figs 34–35 Mid stage instars of *Spodoptera frugiperda*, (top left and right) approximately L3 and L4. Photos M. vd Straten © NPPO, the Netherlands.

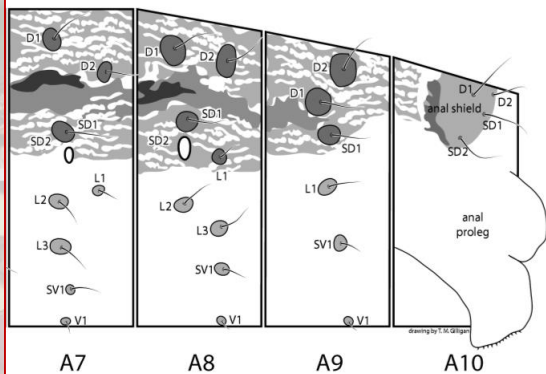
Figs 36–41 Second, third and fourth line, from the left to the right and top to bottom. Last instar of *Spodoptera frugiperda*. Photos M. vd Straten © NPPO, the Netherlands. Fig. 41: Seta MD1, MD2, MSD1 and MSD2 present on 2nd and 3rd thorax segments; M1 and SD2 present on all abdominal segments (2); a heavily sclerotized spot at ventral margin of SD1- & SD2-pinaculum (3); on 2nd and 3rd thorax segments seta L3 about half the length of L1, L2 is hairlike and situated on ventral margin of the spiracular line; on 1st thorax segment setae SD1 and SD2 on a joint pinaculum positioned ventral of the thorax shield (5); MXD1 is present at posterior margin of thoracic shield.



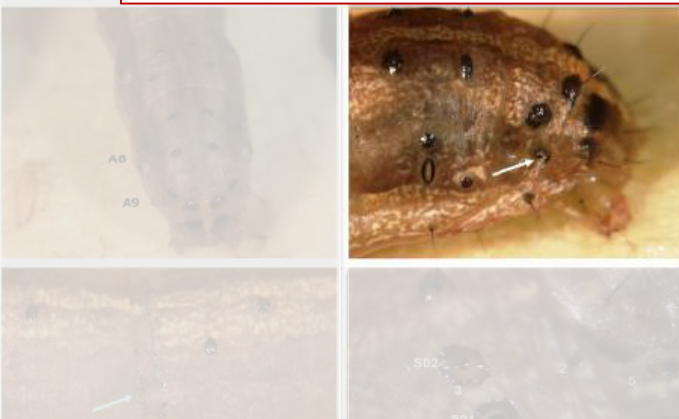
Figs 34–35 Mid stage instars of *Spodoptera frugiperda*, (top left and right) approximately L3 and L4. Photos M. vd Straten © NPPO, the Netherlands.

Figs 36–41 Second, third and fourth line, from the left to the right and top to bottom. Last instar of *Spodoptera frugiperda*. Photos M. vd Straten © NPPO, the Netherlands. Fig. 41: Seta MD1, MD2, MSD1 and MSD2 present on 2nd and 3rd thorax segments; M1 and SD2 present on all abdominal segments (2); a heavily sclerotized spot at ventral margin of SD1- & SD2-pinaculum (3); on 2nd and 3rd thorax segments seta L3 about half the length of L1, L2 is hairlike and situated on ventral margin of the spiracular line; on 1st thorax segment setae SD1 and SD2 on a joint pinaculum positioned ventral of the thorax shield (5); MXD1 is present at posterior margin of thoracic shield.





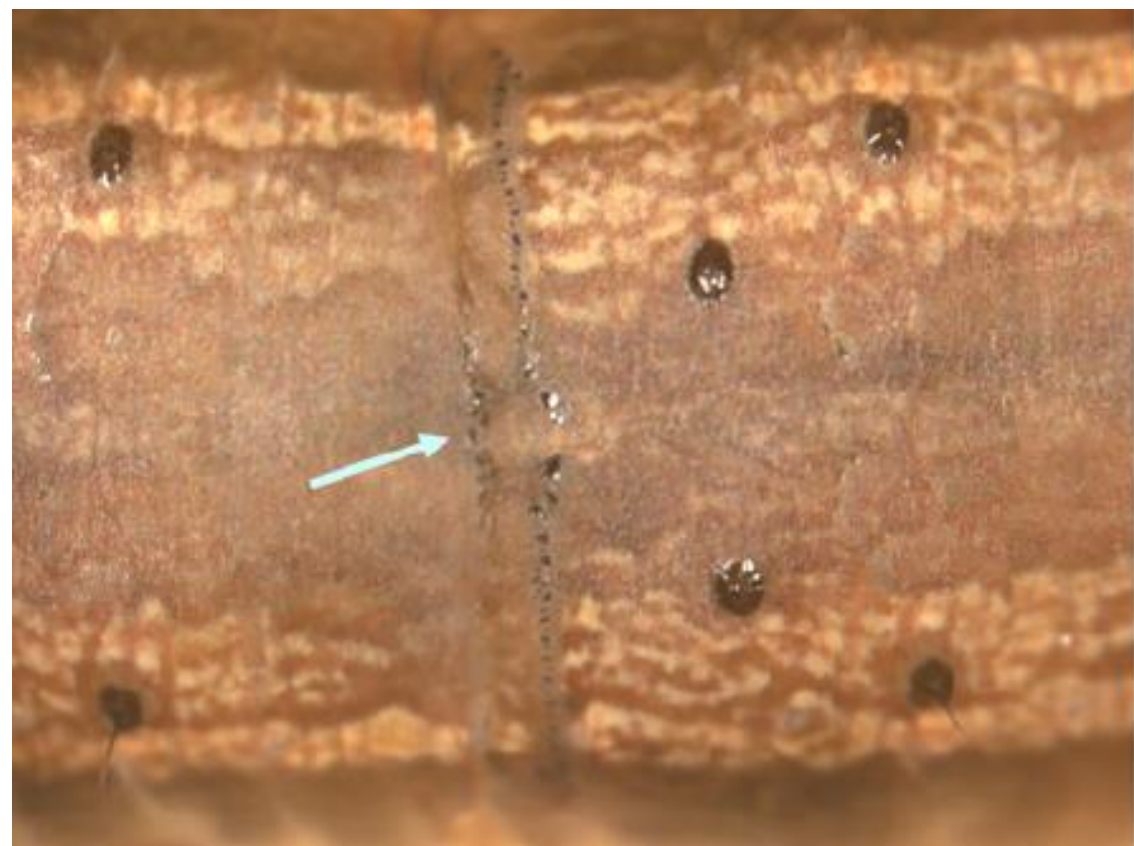
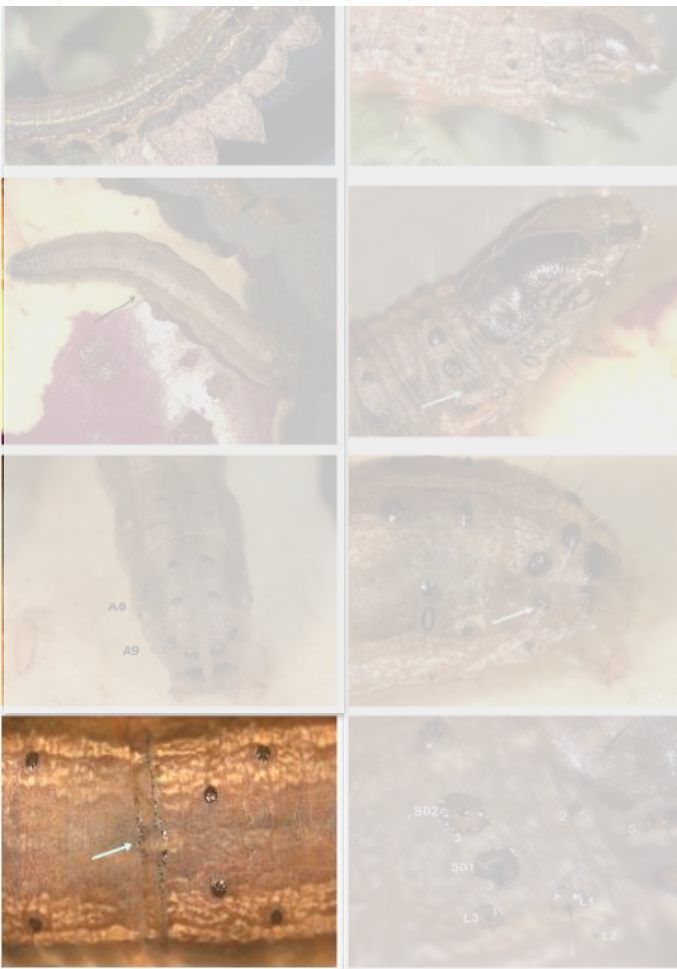
ra larvae.
www.lepintercept.org].

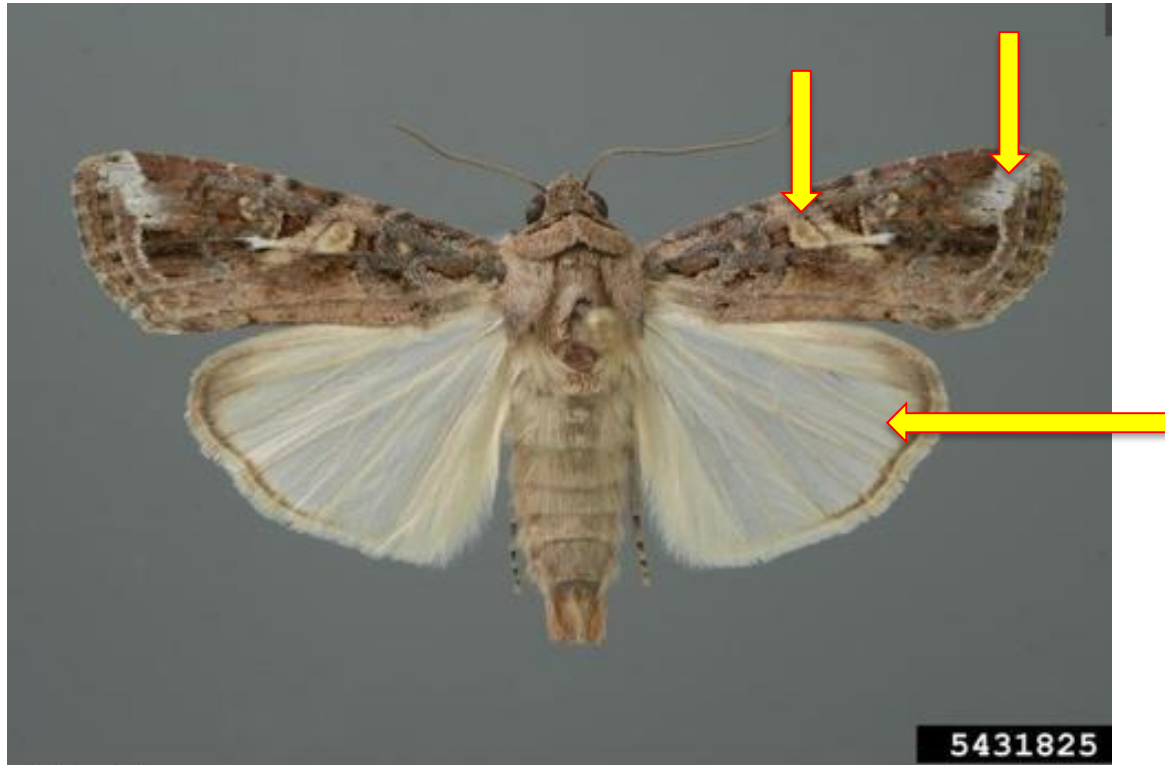


Figs 34–35 Mid stage instars of *Spodoptera frugiperda*, (top left and right) approximately L3 and L4. Photos M. vd Straten © NPPO, the Netherlands.

Figs 36–41 Second, third and fourth line, from the left to the right and top to bottom. Last instar of *Spodoptera frugiperda*. Photos M. vd Straten © NPPO, the Netherlands. Fig. 41: Seta MD1, MD2, MSD1 and MSD2 present on 2nd and 3rd thorax segments; M1 and SD2 present on all abdominal segments (2); a heavily sclerotized spot at ventral margin of SD1- & SD2-pinaculum (3); on 2nd and 3rd thorax segments seta L3 about half the length of L1, L2 is hairlike and situated on ventral margin of the spiracular line; on 1st thorax segment setae SD1 and SD2 on a joint pinaculum positioned ventral of the thorax shield (5); MXD1 is present at posterior margin of thoracic shield.

Figs 36–41 Second, third and fourth line, from the left to the right and top to bottom. Last instar of *Spodoptera frugiperda*. Photos M. vd Straten © NPPO, the Netherlands. Fig. 41: Seta MD1, MD2, MSD1 and MSD2 present on 2nd and 3rd thorax segments; M1 and SD2 present on all abdominal segments (2); a heavily sclerotized spot at ventral margin of SD1- & SD2-pinaculum (3); on 2nd and 3rd thorax segments seta L3 about half the length of L1, L2 is hairlike and situated on ventral margin of the spiracular line; on 1st thorax segment setae SD1 and SD2 on a joint pinaculum positioned ventral of the thorax shield (5); MXD1 is present at posterior margin of thoracic shield.





adult moth

Lyle Buss, University of Florida, Bugwood.org



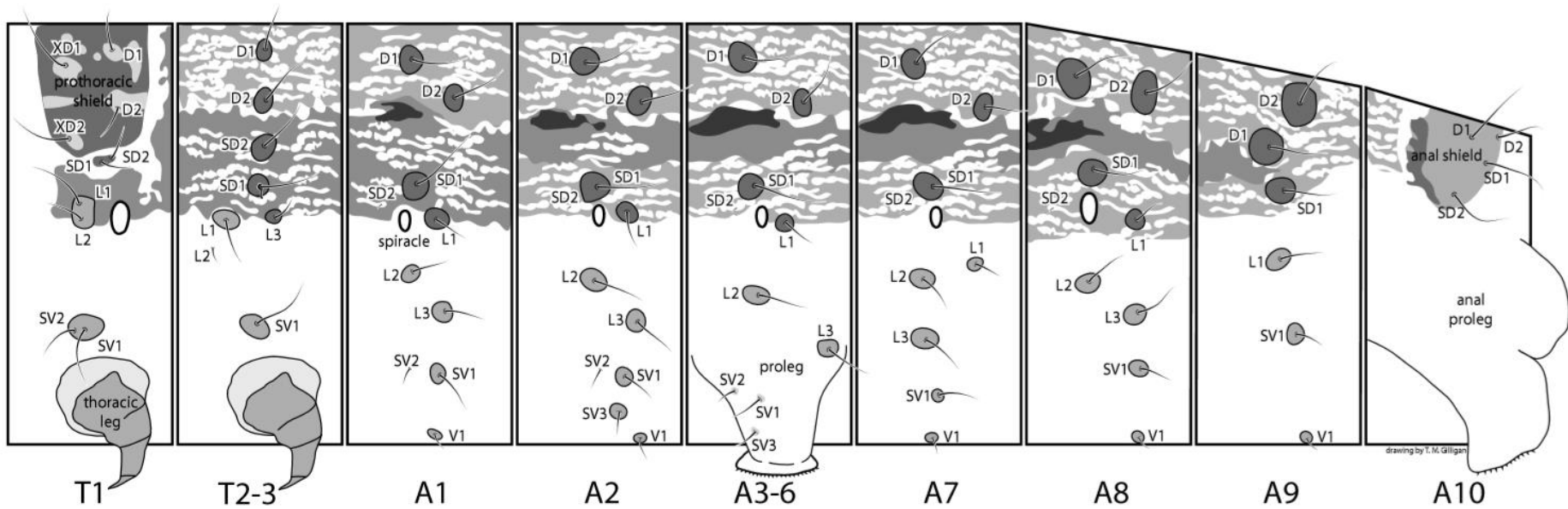
Photo by Daniel Rodriguez (UQ)







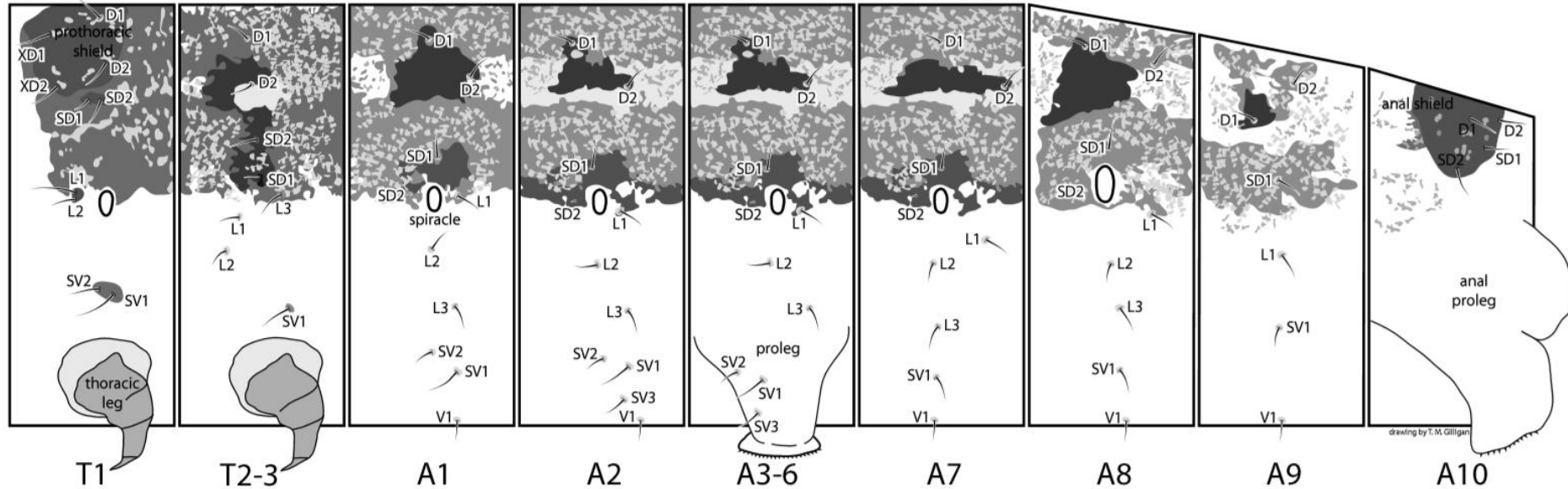
Spodoptera frugiperda (J. E. Smith)



Gilligan, T. M. & S. C. Passoa. 2014. *LepIntercept, An identification resource for intercepted Lepidoptera larvae*. Identification Technology Program (ITP), USDA/APHIS/PPQ/S&T, Fort Collins, CO [accessed at www.lepintercept.org].

http://idtools.org/id/leps/lepintercept/images/setalmap/print/frugiperda_setalmap.pdf

Spodoptera litura (Fabricius)



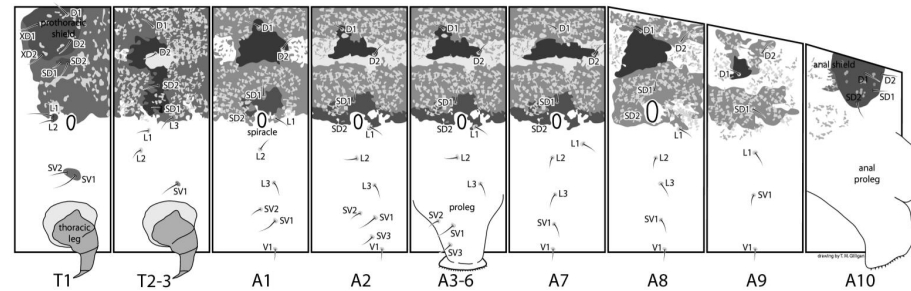
Gilligan, T. M. & S. C. Passoa. 2014. *LepIntercept*, An identification resource for intercepted *Lepidoptera* larvae. Identification Technology Program (ITP), USDA/APHIS/PPQ/S&T, Fort Collins, CO [accessed at www.lepintercept.org].

http://idtools.org/id/leps/lepintercept/images/setalmap/print/litura_setalmap.pdf

Spodoptera litura (tobacco cutworm)



Spodoptera litura (Fabricius)



Gilligan, T. M. & S. C. Passoa. 2014. *LepIntercept*, An identification resource for intercepted *Lepidoptera* larvae. Identification Technology Program (ITP), USDA/APHIS/PPQ/S&T, Fort Collins, CO [accessed at www.lepintercept.org].

False Armyworm *Leucania loreyi*



(Photo: courtesy of Graeme Cocks, Townsville, Queensland)



(Photo: courtesy of Galerie du Monde des insectes)

<http://lepidoptera.butterflyhouse.com.au/hade/loreyi.html>

S. litura

357

2 mm

Coremata
one lobe

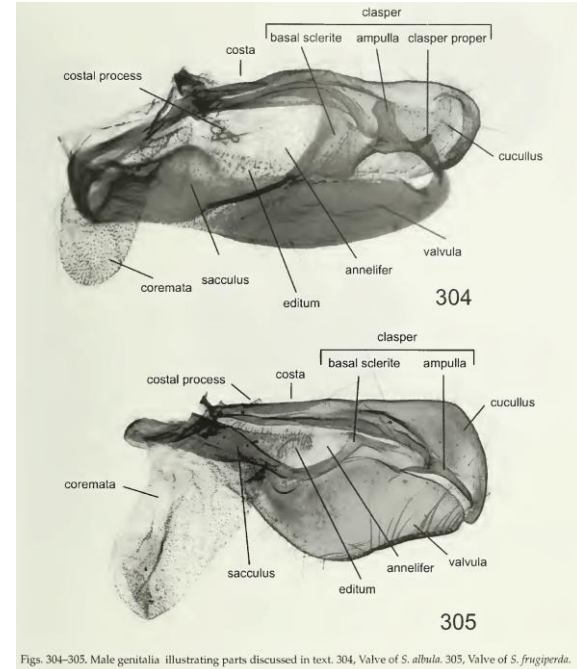
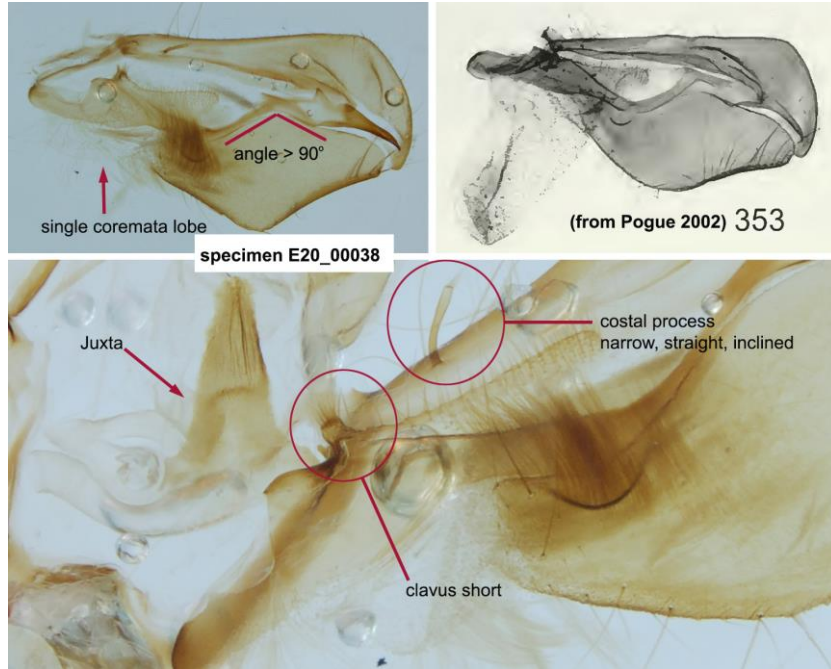
Clavus

Costal process

Valve

Aedeagus

Fig. 63 Male genitalia *Spodoptera frugiperda*. Photos © J. Brambila, USDA-APHIS-PPQ.





(Photo: courtesy of [Graeme Cocks](#), Townsville, Queensland)



False armyworm



Fall armyworm

